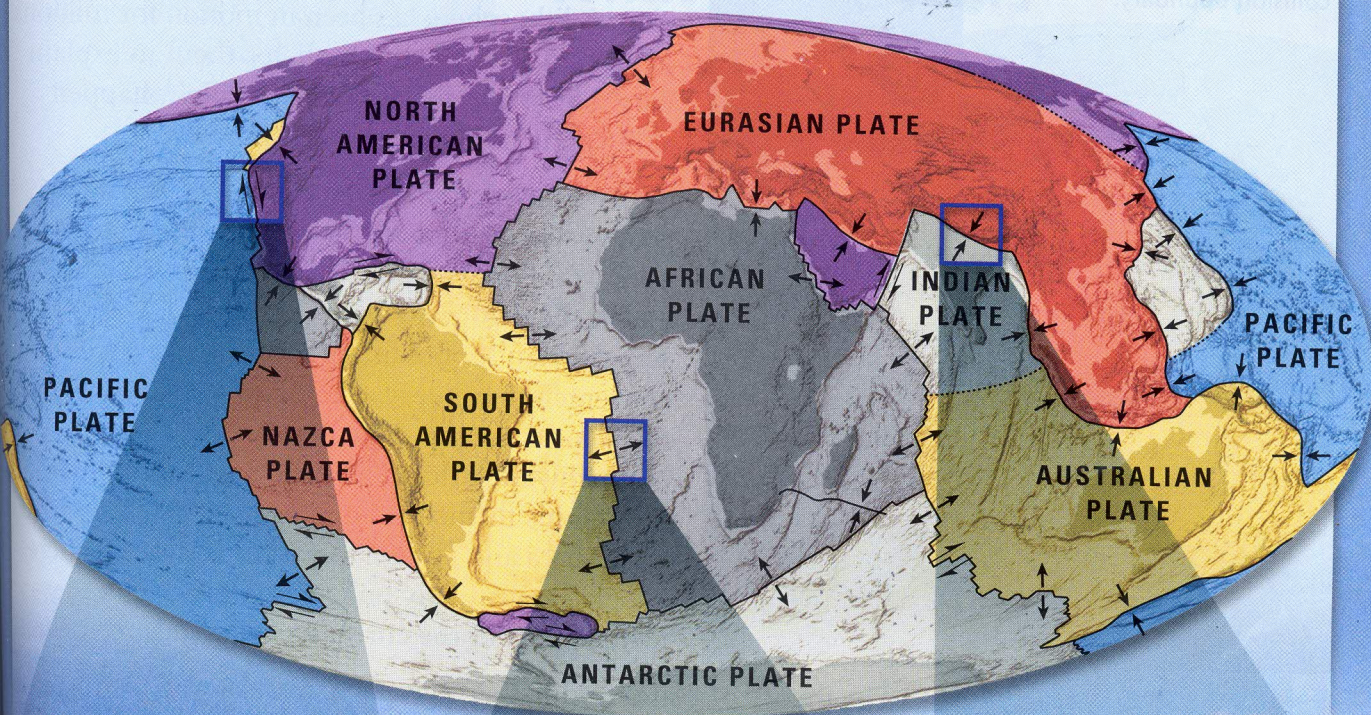
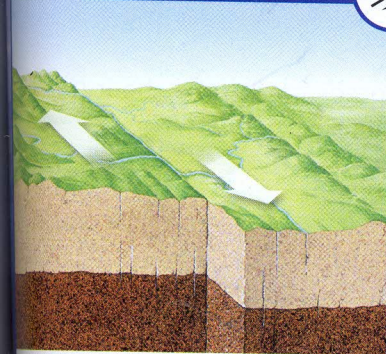


Tectonic Plate Boundaries

There are three types of plate boundaries: transform, divergent, and convergent. Major geologic events occur at all three types.

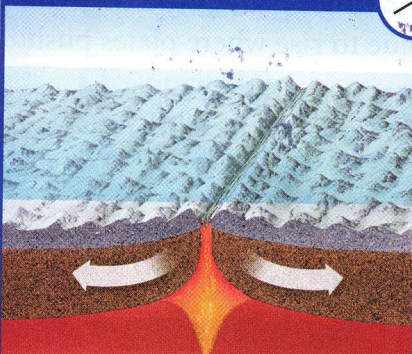


Transform Boundaries



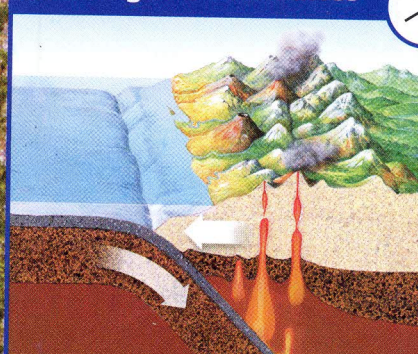
Plates scrape horizontally past each other. Crust is neither formed nor destroyed.

Divergent Boundaries



As plates move apart, new crust is built, forming mid-ocean ridges and rift valleys.

Convergent Boundaries



Crust is destroyed where plates subduct. It is folded where plates collide.